

# Bryce Canyon National Park

## 1-Day Deluxe Itinerary

### Editor's Note

Bryce Canyon is a relatively small national park that packs a big punch. It's home to the world's largest concentration of hoodoos - sandstone pillars - that create a fantastical landscape that looks like something from an alien planet.

The canyon is named after Ebenezer Bryce, who settled nearby in 1870. He famously said of Bryce Canyon that "it's a hell of a place to lose a cow." That's no doubt true - but these days it's become very popular.

With popularity comes people. It can be difficult to know the best way to beat the crowds, the best hikes to do, and the best places and times to view the hoodoos.

This is what this itinerary planner is here for.

Follow this detailed plan, while making choices along the way, and you will have the perfect 1-day itinerary tailored to your needs and comfort level but without the stress and hassle of planning from scratch.

Enjoy your trip to Bryce Canyon!

*James*

**James Ian**  
Founder



**Parks Collecting**



# WHAT'S INCLUDED

- P1. Park Overview
- P3. Tips For Visiting Bryce Canyon
- P4. How to Use This Itinerary Planner
- P6. Itinerary Updates
- P7. Schedule At A Glance
- P8. Detailed Itinerary
- P28. Adjusting Your Schedule
- P29. Useful Links
- P30. Notes

## Bonus Extras

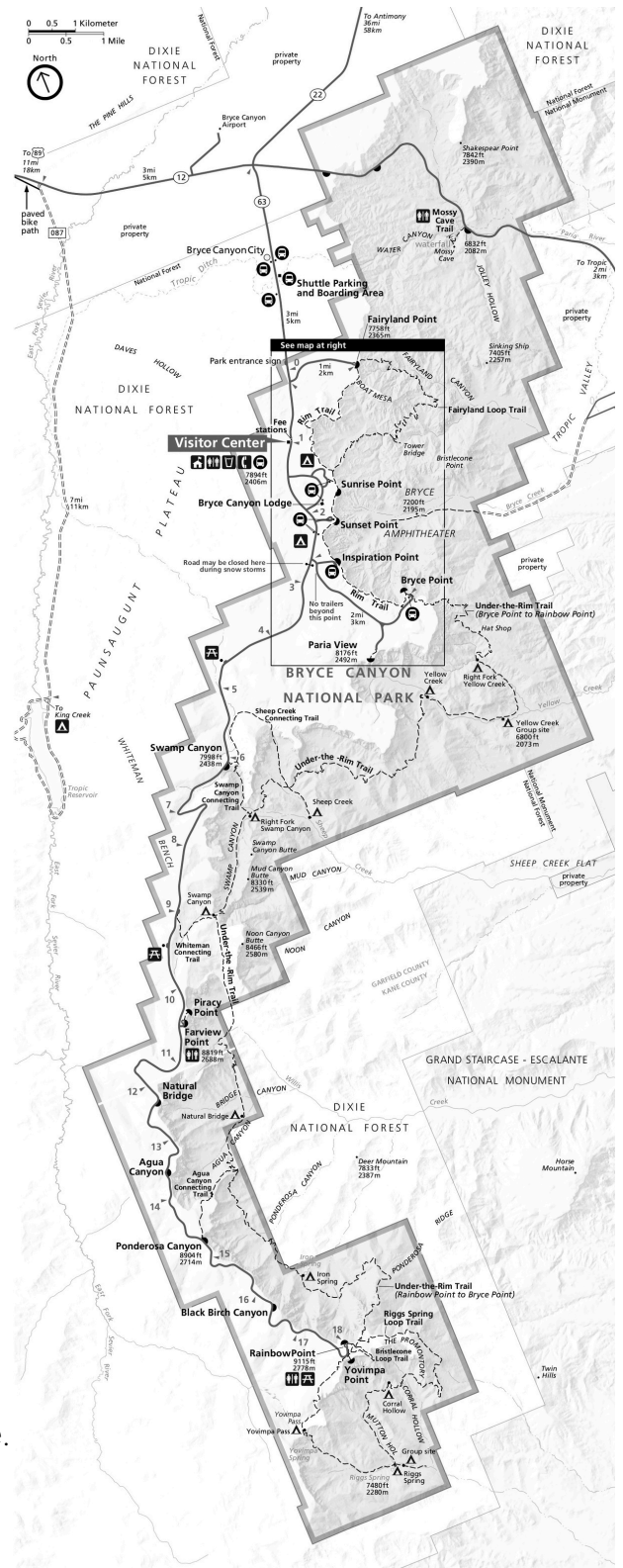
- Accommodations Guide
- Dining Guide
- Shuttle Guide

# PARK OVERVIEW

## Getting Your Bearings

Bryce Canyon, which is technically not a canyon at all since it isn't carved by water, is a relatively small national park that's easy to get around. The main gateway town is Bryce Canyon City, which consists of little else other than services for visitors to the park.

The main section of the national park is Bryce Amphitheater, also called the "Silent City". This is a large 'bowl' that has the most - and arguably the best - hoodoos. The Visitor Center and in-park lodging are on the rim here. The only road through the park continues for another 18 miles to Rainbow Point.





# TIPS FOR VISITING

## Entrance Fee

Visit the [NPS website](#) for the latest fees. If you plan to visit more than a couple of parks in a year, I recommend buying an [America The Beautiful Pass](#).

## Getting There

The major gateway city is **Bryce Canyon City**, and this is where this itinerary assumes you are based. The nearest airport, the small Cedar City Regional Airport, which has connections to Salt Lake City, is 1 hour 45 minutes away. The nearest major airports are Las Vegas Harry Reid International Airport and Salt Lake City International Airport, both about 4.5 hours away.

[>>> Click here to book your flights](#)

[>>> Click here to book your rental car](#)

Most people combine a trip to Bryce Canyon with Zion National Park as well, which I recommend. You can just focus on those two parks, include them in an epic road trip around Utah's Big Five national parks, or add on the Grand Canyon. I suggest starting in Bryce Canyon National Park. From Bryce Canyon, drive south to Zion and enter the park at the East Entrance. At the end of your trip to Zion, you can drive to Las Vegas or the Grand Canyon.

If you're visiting Zion National Park and/ or Grand Canyon National Park as well, you can get my **Zion Itinerary** and **Grand Canyon Itinerary** at a 20% with discount code BRYC.

## Getting Around

You'll need a vehicle to get to the park. From Bryce Canyon City, you can take the free shuttle when it's operating, but this itinerary mostly starts before the first shuttle of the day, so it's best to drive to Bryce Amphitheater, park there, and then walk or take the shuttle around that area. Read the [Shuttle Guide](#) for more information. When you go to Rainbow Point, you can take the shuttle tour or drive. You do not need a high clearance vehicle or 4WD/ AWD for any of the places on this itinerary and you can drive it in an RV or with a trailer.

However, there are some **parking restrictions for longer vehicles**. Vehicles longer than 20 feet cannot park at the Visitor Center 1-hour Parking Lot, Sunrise Point, Bryce Lodge, Sunset Point, Inspiration Point, or Bryce Point during shuttle hours. They are also prohibited from parking at Paria View at all times because the parking lot is too small. You can park at the Visitor Center Additional Parking Lot, the Shuttle Station Parking Lot in Bryce Canyon City, or at your accommodation.

# HOW TO USE THIS ITINERARY

This itinerary planner is designed to balance taking away the overwhelm with still giving you the freedom to **create an itinerary that suits your interests** and comfort level.

Please read all this information carefully so you can take full advantage of the itinerary planner.



## Hikes

Where appropriate, several hike options are given, based on varying levels of difficulty and interest. In this case, you can **choose the hike** that best suits you.



## Description

Includes **don't-miss sights and sites**. Where this includes wildlife, keep in mind that although these are common places to see wildlife, wild animals don't always show up on cue, so I can't promise you will see any animals.



## Meals

**Meal suggestions** are given. Detailed options are provided in the [Dining Guide](#).



## Driving Directions

Detailed **driving directions** are provided for each day. I have indicated where a road is closed to RVs and/ or trailers.



## Things To Note

Includes any warnings, **important information**, considerations or closures.



## Highlights

There are great views throughout the park, but these are especially **famous viewpoints and/ or sights**.



## Less-Active Options

To really get the most out of the national parks, you need to leave the roads, but that doesn't mean you can't have an awesome time if you can't or prefer not to hike.

Non-hiking options are great for those with **limited mobility or fitness**.

Some of these suggestions involve no walking at all, while others may involve short distances on flat or mostly flat paths.



## Accommodations

This itinerary is based around you staying in nearby **West Yellowstone**. Accommodation options in West Yellowstone are provided in the [Accommodations Guide](#). However, I recommend staying inside the park if possible and you will also find all of the national park lodges and campgrounds in the [Accommodations Guide](#). I also list some places to stay near the other park entrances.

If you do stay somewhere other than West Yellowstone, read the **Adjusting Your Schedule** section so you can easily adapt your schedule based on where you stay.



## Recommended

This symbol indicates that this is my **recommended choice**. However, you can still choose whichever option best suits your comfort level and interests.



The itinerary is timed for the best hiking conditions, the best chance of getting a parking space, and the best chance of shorter lines at the shuttle.

Consequently, the itinerary has you **getting up early** in the morning. Bryce Canyon is very popular and by getting into the park early, you will avoid having to wait in line to get through the park entrance. This is also the best light for photos. The national parks are more popular than ever, so the earlier you get there, the better, so if you started even earlier, that would be even better.

The itinerary has a detailed breakdown of suggested **activities**, with **alternatives** or **flexible options** in the morning and afternoon. Each of the alternate options take about the same length of time, so you can choose one, then move on to the next activity no matter which option you chose.

I strongly suggest **sticking to the order of events** in the schedule. They are arranged and timed intentionally so that you get the most out of your trip.

Note that the **maps** here are designed to give you an overview of the park and where to go, but are no replacement for a detailed map, especially of the hiking trails. You can pick up maps at a Visitor Center or buy a very detailed printed topographic map there or before you go.

If you're coming straight from, or going to, Zion National Park, see the **Adjusting Your Schedule** section for how to do this.



# ITINERARY UPDATES

This itinerary is reviewed annually, but is not updated in real time, throughout each year. However, I want you to have the best trip possible and for this itinerary to be as useful as possible. So, I do provide updates on changing conditions such as road works, facilities closures, trail closures, etc. that may affect part of this itinerary.

## [CHECK FOR ITINERARY UPDATES HERE](#)

I update this regularly, so I recommend checking frequently, especially as your trip gets closer.

---

## THE DAY BEFORE



You will arrive in Bryce Canyon City (or wherever your accommodation is).

Check the [Accommodation Guide](#) to find a place to stay in Bryce Canyon City or nearby.



Use the [Dining Guide](#) to find somewhere for dinner in Bryce Canyon City or near your accommodation.

Pick up a picnic lunch for tomorrow if you want to have a picnic.



# DAY AT A GLANCE

Today you're going to see the incredible "Silent City", Bryce Amphitheater. Choose an incredible hike below the rim or spend the morning on the rim. In the afternoon, you'll enjoy the scenic drive through most of the remainder of the park.

## OPTION A [P.8,9-11]

7:15AM: Drive from Bryce Canyon City  
7:30AM: Arrive **Sunrise Point**  
7:45AM: **Queens Garden-Navajo Loop** Hike  
10:15AM: Arrive **Sunset Point**.

## OPTION B [P.15-18]

7:30AM: Drive to Mossy Cave trailhead  
7:45AM: Hike to **Mossy Cave**  
8:15AM: Drive to accommodation or shuttle parking  
8:30AM: Take **shuttle** to Bryce Point  
9:00AM: **Bryce Point**  
9:15AM: Shuttle to Inspiration Point  
9:30AM: **Inspiration Point**  
10:00AM: Shuttle to Sunset Point  
10:15AM: **Sunset Point**  
10:45AM: Walk to Sunrise Point  
11:15AM: **Sunrise Point**  
11:30AM: Walk to Lodge  
11:45AM: Lunch

## OPTION A1 [P.12-13]

10:30AM: **Rim Trail** to Inspiration Point  
11:00AM: **Inspiration Point**  
11:30AM: Rim Trail to Bryce Point  
12:10AM: **Bryce Point**  
12:20PM: Shuttle to Lodge  
12:30PM: Lunch

## OPTION A2 [P.12, 14]

10:30AM: Take **shuttle** from Sunset Point to Visitor Center  
11:00AM: Shuttle to Bryce Point  
11:15AM: **Bryce Point**  
11:30AM: Shuttle to Inspiration Point  
11:45AM: **Inspiration Point**  
12:15PM: Shuttle to Lodge  
12:30PM: Lunch

## OPTION A [P.19-23]

1:30PM: Take shuttle to your vehicle  
1:45PM: **Drive to Rainbow Point**  
2:30PM: Arrive Rainbow Point  
2:45PM: Bristlecone Loop hike  
3:45PM: Yavimpa Point  
4:00PM: Leave Rainbow/ Yavimpa Points  
4:05PM: Blackbirch Canyon  
4:10PM: Leave Blackbirch Canyon  
4:13PM: Ponderosa Canyon  
4:20PM: Leave Ponderosa Canyon  
4:23PM: Agua Canyon  
4:30PM: Leave Agua Canyon  
4:24PM: Natural Bridge  
4:40PM: Leave Natural Bridge  
4:44PM: Farview Point. Hike to Piracy Point  
4:55PM: Leave Farview Point  
5:02PM: Swamp Canyon Overlook  
5:10PM: Leave Swamp Canyon Overlook  
5:25PM: Bryce Canyon City (your accommodation)

## OPTION B [P.24-25]

1:30PM: **Shuttle** tour to **Rainbow Point** scenic drive  
4:30PM: **Visitor Center**  
5:15PM: Shuttle to Bryce Canyon City

6:00PM: Dinner

## EVENING OPTIONS [P.26-27]

Sunset: Paria View  
7:00PM: Ebenezer's Barn & Grill western show  
9:00PM: Ranger Evening Program

Time varies: Night sky star gazing  
Time varies: Constellation Tour  
Time varies: Full Moon Hike



# 1 DAY ITINERARY

## MORNING: 7:15AM - 1:30PM

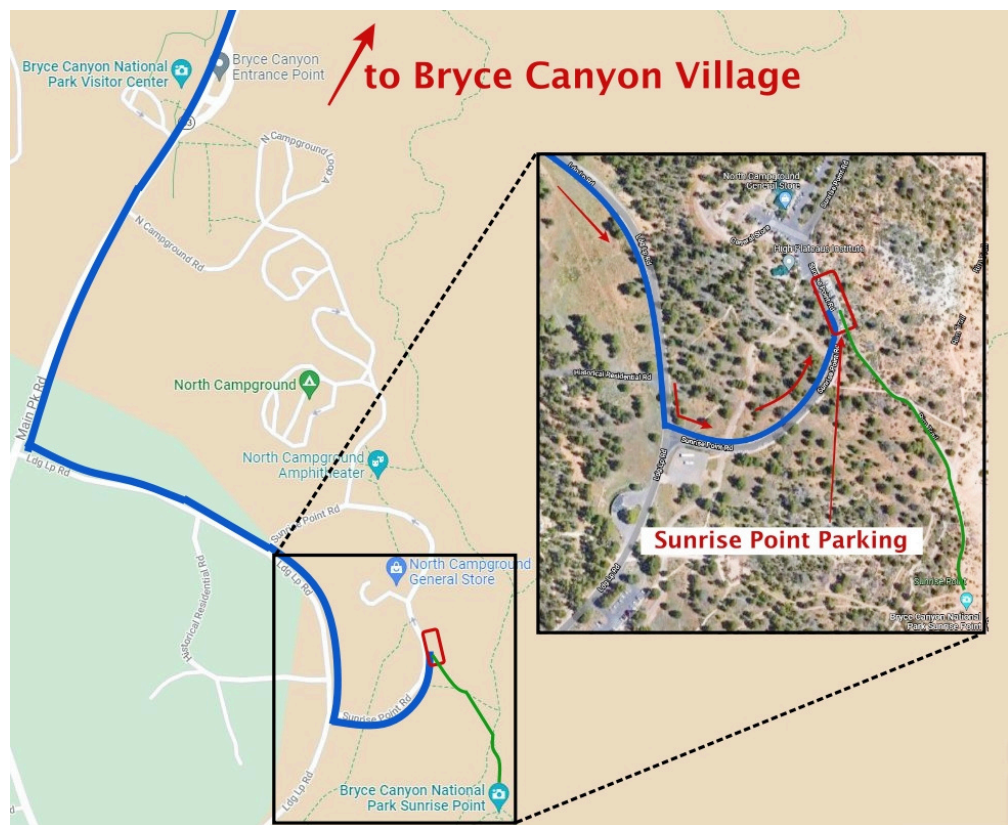


### DIRECTIONS: Bryce Canyon City - Sunrise Point (or Visitor Center Additional Parking)

Drive south along the main road UT-63 and enter the national park after about 2.5 miles (5 minutes). From the entrance station, continue straight past the Visitor Center for 0.5 miles. Turn left on to Lodge Loop Road, then after another 0.5 miles, turn left on to **Sunrise Point Road**. There is

a small parking area on the right side about 0.2 miles along the road.

If this parking is full, continue along Sunrise Point Road. It loops



back to Lodge Loop Road. Turn right and then right again when you get to the Main Park Road. Take the first right (0.3 miles along) on to North Campground Road. The Visitor Center Additional Parking area (which does not have a one-hour limit) is the first road on the left, soon after.

If you want to go straight to the **Visitor Center Additional Parking** (which you'll have to if you have a vehicle 20 feet or longer), take the first left after the Visitor Center. This is North Campground Road. Take the first left into the parking lot.





# 1 DAY ITINERARY

## MORNING: 7:15AM - 1:30PM



### Option A: Queen's Garden-Navajo Loop + Bryce Amphitheater

This morning you'll venture down into the canyon on the most famous trail, then walk or take the shuttle along the rim to see the canyon from above.



### Breakfast

Have breakfast at your hotel or campground before leaving.



If you decide to get up for the **sunrise**, you could see the sunrise from Sunrise Point, have breakfast at the lodge and then start the hike a little later. Check the [time of the sunrise](#) during your visit.



### Queen's Garden - Navajo Loop

This is THE classic Bryce Canyon hike. It passes through 3 tunnels cut through sandstone fins, reaches the canyon floor, takes in the most famous hoodoos, and emerges dramatically via steep switchbacks in a narrow part of the canyon.



The trail starts at **Sunrise Point**. There is a small parking area at Sunrise Point. I recommend driving there (unless you are staying inside the park, in which case you could walk there), as the shuttle doesn't start this early. And it's best to get an early start. However, if you'd prefer to take the shuttle, get the first shuttle and get off at the Sunrise Point stop.

From the parking area, it's a short walk to Sunrise Point. If the parking area is full, you can park at the main Visitor Center Additional Parking Lot and walk from there (20 minutes).

This hike can also be done in the reverse order starting at Sunset Point; However, it's best done in this direction because you get better views of Bryce Amphitheater, since the Queen's Garden trail has open views (vs. the closed, narrow canyon and switchbacks on the Navajo Trail), and the descent is less steep and therefore safer.



# 1 DAY ITINERARY

## MORNING: 7:15AM - 1:30PM



### Sunrise Point 7:30AM

First up, enjoy the view from **Sunrise Point**. Sunrise Point is the northernmost of the four major viewpoints that overlook the iconic Bryce Amphitheater. There's a 360° view, so, despite its name, this is also a good place to see the sunset. This will be your first view of Bryce Amphitheater and it is truly breathtaking. Take some time to soak it in before starting on the Queen's Garden Trail.

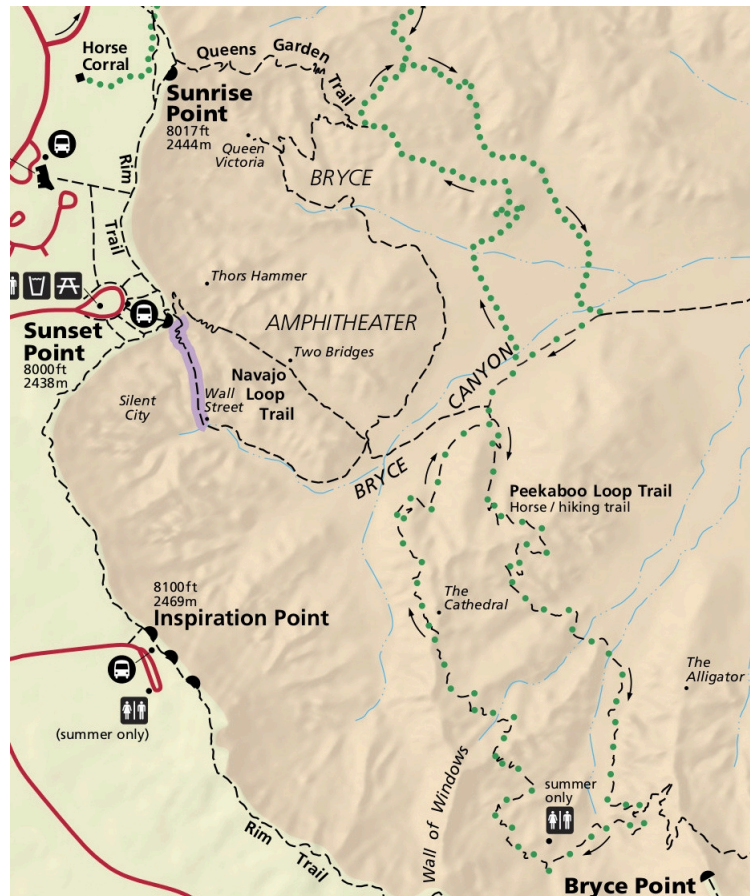


### Queen's Garden-Navajo Loop 7:45AM

The 2.9-mile, moderate trail has a great combination of the open views and cool hoodoos on the Queen's Garden Trail and the dramatic switchbacks on the Navajo Trail.

The trail starts down a wide, not too steep trail with great views of the hoodoos and ridges in the canyon. After 0.5 miles, the trail heads down a series of wide switchback and then turns to the right, descending along a ridge. At 0.7 miles, it passes a horse trail on the left, then soon after goes down more switchbacks. You'll pass through three tunnels cut into sandstone fins that cross the trail.

At 0.9 miles, you'll come to a side spur trail (0.1 miles round trip) on the right. This goes into the middle of Queen's Garden to the Queen Victoria



# 1 DAY ITINERARY

## MORNING: 7:15AM - 1:30PM



hoodoo. Fortunately, there's a small sign with a photo of Queen Victoria to help you identify the hoodoo. When you see the photo, it actually does look like Queen Victoria standing in profile on top of a pedestal.



Back on the main trail, continue along the floor of the canyon, through some pine tree and past more hoodoos. You'll come to the well-signed junction with the Navajo Loop Trail 1.75 miles into the hike.

The two sides of the Navajo Loop run roughly parallel to each other, and you can take either of them back to the rim. A hard right is the Two Bridges trail. The next right is the Wall Street option. Off to the left is the Peekaboo Trail. Most people choose to go up the Wall Street section. This has the most dramatic switchbacks, although the Two Bridges trail also has some steep and narrow switchbacks.



When you get to the top of the rim at Sunset Point, if you climbed up Wall Street, it's worth going down (yes, I know, you just came up!) the Two Bridges Trail just for a bit. This top section (before the Two Bridges switchbacks) has the best view of the famous Thor's Hammer hoodoo.



If Wall Street is open, I recommend going up that. However, the Wall Street section is closed in winter, so Two Bridges is the only option. It's still great!



### Sunset Point 10:15AM

This is another of the four major viewpoints of Bryce Amphitheater and you will want to take some time to soak in the splendor, and see where you just hiked.



# 1 DAY ITINERARY

## MORNING: 7:15AM - 1:30PM



### Bryce Amphitheater

You'll spend the rest of the morning along the Rim Trail at Bryce Amphitheater and see the other 2 of the 4 most famous viewpoints in the park. You can either walk along the Rim Trail to them (and then catch the shuttle back - Option A1) or, if you've had enough walking for a while, catch the shuttle to each of the viewpoints (Option A2).



This itinerary doesn't include an option for driving to the viewpoints because, even though there are small parking areas at both viewpoints, but they are usually full 10:00AM - 3:00PM. In addition, there are parking restrictions for longer vehicles when the shuttle is running (See Getting Around section P3.)

### Option A1: Walk Rim Trail



#### Rim Trail to Inspiration Point 10:30AM

The Rim Trail extends along the rim of Bryce Amphitheater for 5.5 miles from Fairyland Point to Bryce Point. The section between Sunset Point and Bryce Point is not flat.

When you get to the rim from the Navajo Loop Trail, rather than going right to get back to Sunrise Point and complete the loop, turn left. This will take you to the third major viewpoint, Inspiration Point. There is a moderate incline.



#### Inspiration Point 11:00AM

The views of Bryce Amphitheater from here are stunning. Along with Bryce Point, Inspiration Point provides a birds-eye view of Bryce Amphitheater. Soak in panoramic views of the largest collection of hoodoos in the world!

There are actually three viewpoints here over three levels. The views at the top level are the best. The climb to the top level is the steepest part of the Rim Trail you'll walk this morning. Spend some time exploring the different viewpoints and enjoying the breathtaking views.



There are pit toilets at the parking area.



# 1 DAY ITINERARY

## MORNING: 7:15AM - 1:30PM



### Rim Trail to Bryce Point 11:30AM

Continue along the Rim Trail for another 1.5 miles to Bryce Point. It's a fairly easy walk, with some up and down, but nothing too major.



### Bryce Point 12:10PM

This is perhaps the most iconic of the park's viewpoints. The Southern Paiutes people call it "Red Rock Standing Like a Man in a Hole". Looking north, you can see the full length of Bryce Amphitheater's Silent City. Look out for Inspiration, Sunset, and Sunrise Points. You can also see the Wall of Windows near Inspiration Point and the flat top of Boat Mesa in the distance. Look east and on a clear day you can see the town of Tropic in the Paria Valley nearly 3,000 feet below.



### Bryce Canyon Lodge 12:20PM

Take the next shuttle and get off at Bryce Canyon Lodge.



### Lunch 12:30PM

Use the [Dining Guide](#) to choose a place for lunch at Bryce Canyon Lodge.



# 1 DAY ITINERARY

## MORNING: 7:15AM - 1:30PM

### Option A2: Shuttle along Bryce Amphitheater



#### Shuttle to Bryce Point 10:30AM

From Sunset Point, the shuttle only goes in one direction AWAY from Bryce and Inspiration Points. Take the shuttle and get off at the Visitor Center (3 stops), then change to another shuttle going in the opposite direction. Get off at Bryce Point (2 stops). See the [Shuttle Guide](#) for a map and more details.



#### Bryce Point 11:15AM

This is perhaps the most iconic of the park's viewpoints. The Southern Paiutes people call it "Red Rock Standing Like a Man in a Hole". Looking north, you can see the full length of Bryce Amphitheater's Silent City. Look out for Inspiration, Sunset, and Sunrise Points. You can also see the Wall of Windows near Inspiration Point and the flat top of Boat Mesa in the distance. Look east and on a clear day you can see the town of Tropic in the Paria Valley nearly 3,000 feet below.



#### Shuttle to Inspiration Point 11:30AM

Take the next shuttle and get off at Inspiration Point.



#### Inspiration Point 11:45AM

The views of Bryce Amphitheater from here are stunning. Along with Bryce Point, Inspiration Point provides a birds-eye view of Bryce Amphitheater. Soak in panoramic views of the largest collection of hoodoos in the world!

There are three viewpoints over three levels. The views at the top level are the best and worth the walk if you can. Spend some time exploring the different viewpoints and enjoying the breathtaking views.



#### Bryce Canyon Lodge 12:15PM

Take the next shuttle and get off at Bryce Canyon Lodge.



#### Lunch 12:30PM

Use the [Dining Guide](#) to choose a place for lunch at Bryce Lodge.



# 1 DAY ITINERARY

## MORNING: 7:30AM - 1:30PM



### Option B: Mossy Cave + Rim Trail at Bryce Amphitheater

Choose this option if you don't want to hike down into the canyon. You'll start this morning with an optional short hike to Mossy Cave and Water Canyon, then take the shuttle along the rim of Bryce Amphitheater, with an option for some easy walking along part of the Rim Trail.



### Breakfast

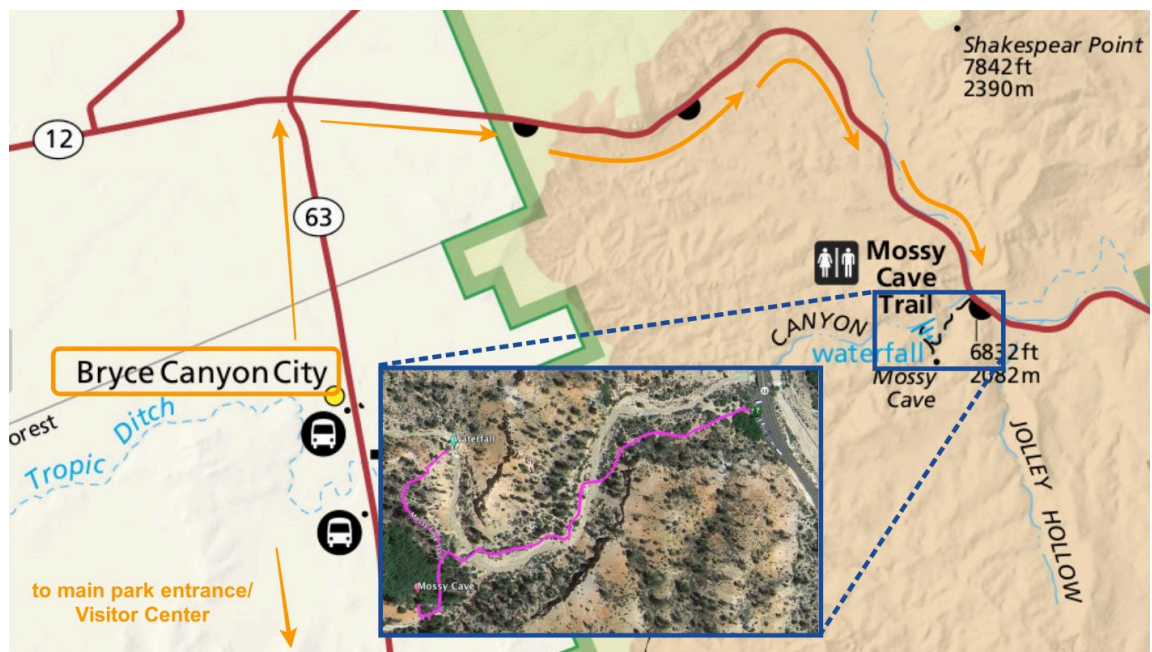
Have breakfast at your hotel or campground before leaving.

If you decide to get up for the **sunrise**, you could see the sunrise from Sunrise Point, have breakfast at the lodge and then start the itinerary. Check the **time of the sunrise** during your visit.



### DIRECTIONS: Bryce Canyon City - Mossy Cave Trailhead

Drive in the direction away from the park's main entrance on UT-63 for about 1.5 miles until you come to the intersection with UT-12. Turn right on to UT-12 at the Welcome to Bryce Canyon Country Circle. Drive for 3.7 miles and you'll come to Mossy Falls Trailhead. There's a small parking area on the right side of the road immediately after crossing a small bridge.





# 1 DAY ITINERARY

## MORNING: 7:30AM - 1:30PM



### Mossy Cave 7:45AM

Mossy Cave is a quiet area of the park that's a lovely way to start your day. It's an easy 0.4-mile each way trail, suitable for most levels of fitness. It's one of the only hikes in Bryce Canyon National Park that begins with a climb and ends with a descent.



The trail goes past a few hoodoos and windows, so it gives you a chance to see some hoodoos up close without needing to hike below the rim of the main canyon.

Near the end, the trail splits in two. To the right, a short trail goes into Water Canyon to a small but lovely waterfall. This 'canyon' is actually an irrigation ditch carved by Mormon pioneers in the early 1890's. It's called the Tropic Ditch because it still feeds water to the town of Tropic!

The short trail to the left at the fork goes to Mossy Cave, a sheltered overhang with water often dripping from the top. The area is filled with mosses in the summer (hence the name) and icicles in the winter.



This itinerary has you going here first thing in the morning. This area has become more popular in recent years, and the small parking lot is invariably full between 10:00AM and 6:00PM. You should have no trouble getting a parking spot this time of the day, but if the parking lot full, you'll have to skip this and try at the end of the day instead. Do not park on the side of the road. It's dangerous to walk along this road, and vehicles that park on the shoulder of the road are often ticketed.

### Rim Trail



The Rim Trail extends along the rim of Bryce Amphitheater for 5.5 miles from Fairyland Point to Bryce Point. There is some elevation change along the trail.



The section between Sunset Point and Sunrise Point is paved and mostly flat, so this is a good section to walk. Pets are allowed in this section (only). However, if you feel like walking more of the trail, then you can do





# 1 DAY ITINERARY

## MORNING: 7:30AM - 1:30PM

### Rim Trail

that, of course. It is mostly downhill from Bryce Point, so if you start there, you can walk and then just hop on the shuttle if you get tired.



### Shuttle to Bryce Point 8:30AM

Take the shuttle from your accommodation or the shuttle parking in Bryce Canyon City and get off at Bryce Point. See the [Shuttle Guide](#) for a map and more details.



### Bryce Point 9:00AM

This is perhaps the most iconic of the park's viewpoints. The Southern Paiutes people call it "Red Rock Standing Like a Man in a Hole". Looking north, you can see the full length of Bryce Amphitheater's Silent City. Look out for Inspiration, Sunset, and Sunrise Points. You can also see the Wall of Windows near Inspiration Point and the flat top of Boat Mesa in the distance. Look east and on a clear day you can see the town of Tropic in the Paria Valley nearly 3,000 feet below.



### Shuttle to Inspiration Point 9:15AM

Take the next shuttle and get off at Inspiration Point.



### Inspiration Point 9:30AM

The views of Bryce Amphitheater from here are stunning. Along with Bryce Point, Inspiration Point provides a birds-eye view of Bryce Amphitheater. Soak in panoramic views of the largest collection of hoodoos in the world!

There are three viewpoints over three levels. The views at the top level are the best, but the climb to here is somewhat steep, so just walk to the areas you are comfortable getting to. Spend some time exploring the different viewpoints and enjoying the breathtaking views.



### Shuttle to Sunset Point 10:00AM

Take the next shuttle and get off at Sunset Point.



# 1 DAY ITINERARY

## MORNING: 7:30AM - 1:30PM



### Sunset Point 10:15AM

This is another of the four major viewpoints of Bryce Amphitheater and you will want to take some time to soak in the splendor. The Navajo Loop Trail starts here, and if you want a short walk below the rim, head down the Two Bridges Trail just for a bit. This top section (before the switchbacks) has the best view of the famous Thor's Hammer hoodoo.



### Walk to Sunrise Point 10:45AM

The section of the Rim Trail between Sunset Point and Sunrise Point is paved and mostly flat, so this is a good section to walk. There are benches along the way to sit, rest and enjoy the views. Pets are allowed in this section (only). However, if you prefer not to walk, you can take the shuttle.

Keep an eye for the Limber Pine trees along the rim that have several feet of exposed roots. You can clearly see just how much the rim has eroded since they initially grew!



### Sunrise Point 11:15AM

Sunrise Point is the northernmost of the four major viewpoints that overlook the iconic Bryce Amphitheater. There's a 360° view, so, despite its name, the views here are great any time of day. This is the start of the Queen's Garden Trail.

If you feel up for it, you could walk down the trail a little way and then return to the rim. You have plenty of time for lunch, so if you start lunch a little later, that's no problem.



### Bryce Canyon Lodge 11:30AM

Walk to nearby Bryce Canyon Lodge.



### Lunch 11:45AM

Use the [Dining Guide](#) to choose a place for lunch at Bryce Canyon Lodge.



# 1 DAY ITINERARY

## AFTERNOON: 1:30PM - 5:30PM



### OPTION A: Rainbow Point Scenic Drive - self drive



Take the shuttle to your vehicle.



### Rainbow Point Scenic Drive 1:45PM

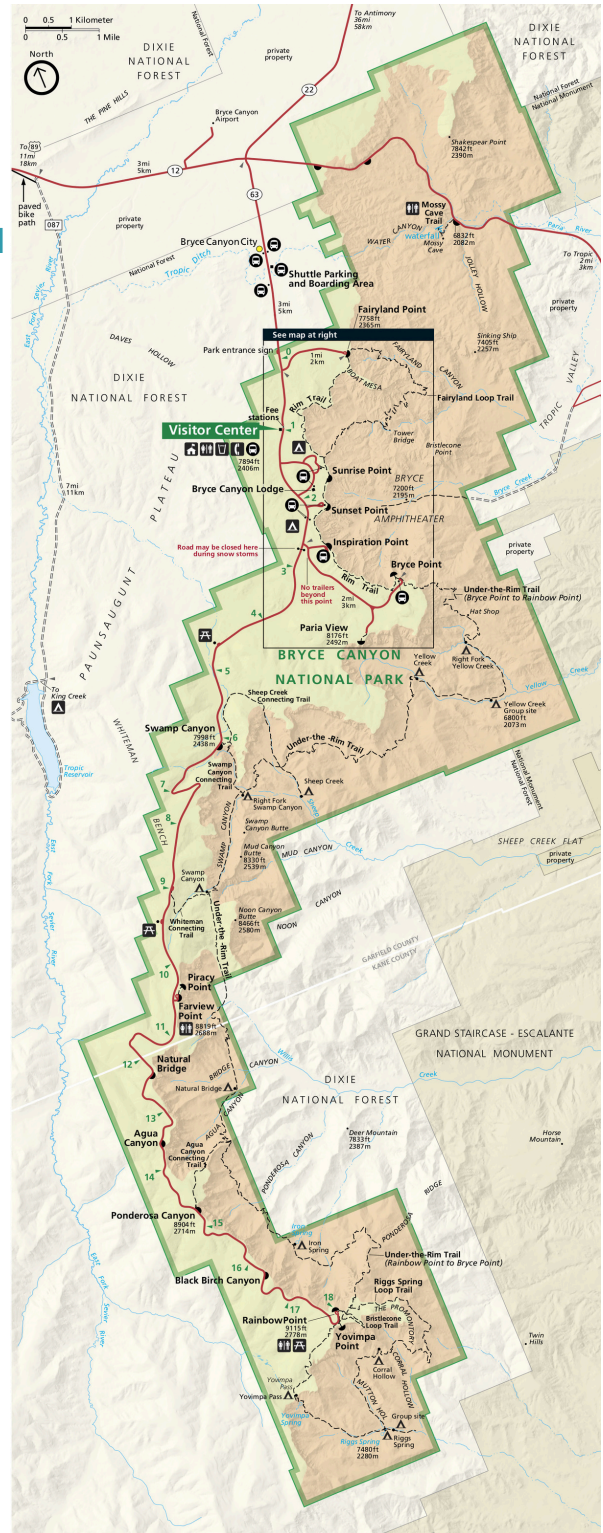
The scenic drive goes for 18 miles from the park entrance along the rim of the canyon to Rainbow Point, where it dead ends. The first 3 miles are the Bryce Amphitheater. The remaining 15 miles are the Southern Scenic Drive, and this is where you'll spend the rest of the morning.

There are nine viewpoints along the way. The NPS advise everyone to drive out to Rainbow and Yovimpa Points first and then stop at the viewpoints on the way back. That way you're on the right side of the road, and you can safely pull in and out without needing to cross the road or traffic.



There are no vehicle restrictions on this road.

The road is open all year, but the 15-mile Southern Scenic Drive section may be temporarily closed in winter due to wintery conditions. Check the [NPS Current Conditions](#) webpage before setting out.





# 1 DAY ITINERARY

## AFTERNOON: 1:30PM - 5:30PM



### DIRECTIONS: Bryce Canyon City | Bryce Amphitheater - Rainbow Point

**From Bryce Canyon City,** drive along UT-63 and through the park's main entrance gate. Keep going straight for another 18 miles until you come to the end of the road.

If you are parked at **Sunrise Point**, continue along Sunrise Point, turn right at the end on to Lodge Loop Road and at the end, turn left on to the main Bryce Canyon Road (UT063). Follow this for 15 miles to the end.

If you're parked at the **Visitor Center Additional Parking** Lot, turn right out of the parking lot on to North Campground Road, then left at the end on to the main Bryce Canyon Road (UT063). Follow this for 15 miles to the end.



### Rainbow Point 2:30PM

There are two viewpoints and a short hike at the end of the road. Restrooms are available here.

At more than 9,100 feet in elevation (1,100 feet higher than Bryce Amphitheater), Rainbow Point is the highest point in the park.



# 1 DAY ITINERARY

## AFTERNOON: 1:30PM - 5:30PM



### Rainbow Point 2:30PM

Looking north, you can clearly see the pink cliffs that the hoodoos form from. These Pink Cliffs are one of the steps in the Grand Staircase.



### Bristlecone Loop 2:45PM

You'll see a trailhead for this trail nearby. It's an easy, mostly flat 0.8-mile loop through spruce, fir forest and pine forests. You'll pass by Bristlecone Pines up to 1,800-years-old. The forest is home to plenty of birds including cheeky ravens and Steller's Jays, as well as squirrels and chipmunks.



### Yovimpa Point 3:45PM

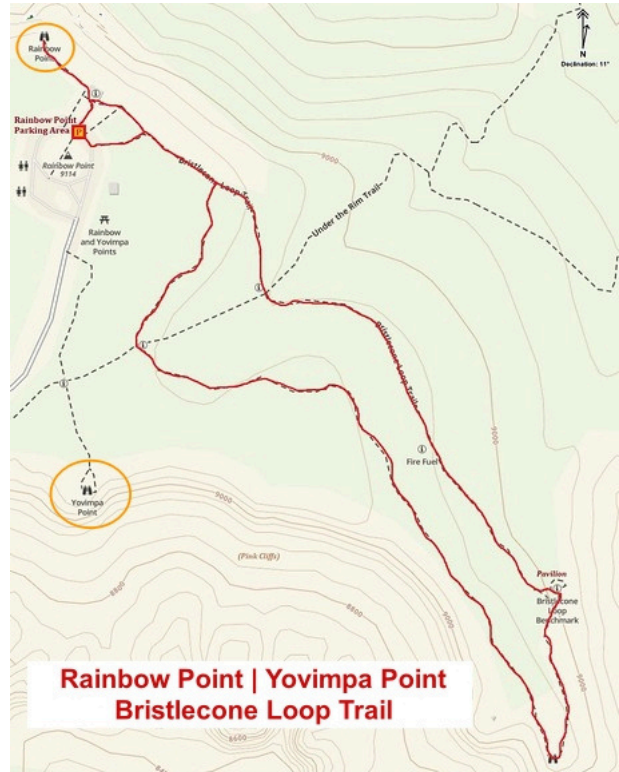
The other lookout in the area, a short walk away, faces south. This is a great place to get a perspective of the Grand Staircase. The different steps in the Grand Staircase are named for the dominant color of rock. The top step is the Pink Cliffs you're standing on. Directly below you are the Grey Cliffs. The White Cliffs are below that – you can see Molly's Nipple in the distance. If you look even further, near the horizon, you can see some red rock beneath the White Cliffs. These are the Vermilion Cliffs. Below them (out of sight) are the Chocolate Cliffs.

Can you see tree-covered hills on the horizon? That's the Kaibab Plateau AKA the North Rim of the Grand Canyon.



### Ponderosa Canyon 4:15PM

Ponderosa Canyon is named after the huge Ponderosa Pines on the canyon floor. Some of them are more than 5 feet in diameter and more than 150 feet tall!





# 1 DAY ITINERARY

## AFTERNOON: 1:30PM - 5:30PM



### Ponderosa Canyon

From here you can see canyons through the Grey Cliffs and White Cliffs. You may notice that the Grey canyons are wider and less deep. This is because the White Cliffs experience more flash floods.



### Agua Canyon 4:25PM

There are two prominent hoodoos here. The taller one on the left is called "The Hunter" and the smaller one on the right is called "The Rabbit" or "The Backpacker". You may struggle to see why – many of the hoodoos were given names before they eroded into unrecognizability. In the distance, you can see Navajo Mountain.

Keep a look out for a California Condor. These enormous birds disappeared from the area many years ago, but have recently been reintroduced.



### Natural Bridge 4:25PM

The highlight here is the eponymous red-colored natural arch. This is how hoodoos start – eventually the top of the arch will collapse and the two sides will become hoodoos. There's also a small stand of Quaking Aspen in the southern corner of the parking lot.



### Farview Point 4:45PM

There are more great views of the Grand Staircase from here. From north to south you can see: the Aquarius Plateau (Pink Cliffs), the Kaiparowits Plateau (Grey Cliffs), Molly's Nipple (White Cliffs), and even glimpses of the Kaibab Plateau/ North Rim of the Grand Canyon. Keep an eye for Osprey. A pair of them nest at Tropic Reservoir and can often be seen flying here.

There are pit toilets available here.



### Piracy Point 4:50PM

A very short (0.15 -mile), flat but unpaved trail leads from the Farview parking lot to Piracy Point.



From this point, you can start to see the Rainbow Point amphitheater.



# 1 DAY ITINERARY

## AFTERNOON: 1:30PM - 5:30PM



### Swamp Canyon 5:00PM

This is a relatively small canyon bound on both sides by fins and hoodoos. The canyon gets its name because of the 'wetland' created by two tiny streams and a spring. There is water year-round, so grasses, irises, and willows grow there.



### Dinner 6:00PM

Use the [Dining Guide](#) to choose a place for dinner.

---

That's the end of your Bryce Canyon itinerary. From here, it's:

- 1 hour 45 minutes to Zion National Park
- 2 hours 40 minutes to Page
- 3 hours 50 minutes to Salt Lake City
- 4 hours to Las Vegas
- 4 hours 10 minutes to Moab
- 5 hours to Grand Canyon Village



# 1 DAY ITINERARY

## AFTERNOON: 1:30PM - 5:30PM

### Option B: Rainbow Point Scenic Drive - shuttle tour

#### Rainbow Point Scenic Drive Tour 1:30PM

The scenic drive goes for 18 miles from the park entrance along the rim of the canyon to Rainbow Point, where it dead ends. The first 3 miles are the Bryce Amphitheater. The remaining 15 miles are the Southern Scenic Drive, and this is where you'll spend the rest of the morning.



If you prefer not to drive yourself, an alternative is to take a **shuttle tour**. Free 3-hour tours leave twice a day, 9:00AM and 1:30PM.



You can take the 1:30PM tour on this itinerary (If you can only get a morning tour, just reverse the AM and PM of this itinerary). The tour stops at Yovimpa Point and Rainbow Point, Agua Canyon, Natural Bridge and Farview Point. Refer to P31-33 for more information about those points (though you will get more information on the tour).

You can make reservations up to 7 days in advance in person at the shuttle office at Ruby's Inn, Ruby's Inn Campground, the Shuttle Parking and Boarding Area or by calling 435-834-5290 (I recommend calling as soon as possible).

You can board at Ruby's Inn, Ruby's Campground, Shuttle Parking and Boarding area, Bryce Canyon Lodge, North Campground and Sunset Campground.



The shuttle tour only runs in shuttle season. See the [Shuttle Guide](#) for more details.



#### Visitor Center 4:30PM

The Visitor Center has exhibits on local geology, wildlife, star gazing, and historic and prehistoric culture. There's a 20-minute informational video shown on the hour and half hour that's worth watching. There's also a bookstore. Check to see if there are any ranger programs on – they often hold short informational talks there.

When you're ready, take the shuttle to your accommodation.





# 1 DAY ITINERARY

## AFTERNOON: 1:30PM - 5:30PM



### Dinner 6:00PM

Use the [Dining Guide](#) to choose a place for dinner.

---

That's the end of your Bryce Canyon itinerary. From here, it's:

- 1 hour 45 minutes to Zion National Park
- 2 hours 40 minutes to Page
- 3 hours 50 minutes to Salt Lake City
- 4 hours to Las Vegas
- 4 hours 10 minutes to Moab
- 5 hours to Grand Canyon Village



# 1 DAY ITINERARY

## EVENING

If you are staying in the area overnight, there are several different things you can do in the evening at and near Bryce Canyon.



### Sunset at Paria View

Paria View is the top spot for sunset because it faces the sun. There's a very prominent castle-like hoodoo that is especially photogenic in the Golden Hour before sunset. Keep an eye for Peregrine Falcons here, too. In late afternoon, you may also see mule deer, elk and even pronghorn antelopes in the nearby meadows.



Vehicles 20 feet and over are not permitted at Paria View because the parking area is too small. If you have a long vehicle, head to one of the other viewpoints for sunset. See P3 for more parking information.



### Ebenezer's Barn and Grill 7:00PM

For a fun evening out, head to Ebenezer's Barn in Bryce Canyon City. They do a traditional western cookout, and it's a well-oiled machine. Dinner is followed by a western show with country and western music. It's a great family night out. It runs in the peak season only.

Check [Ebenezer's website](#) for details and to make reservations.



### Evening Programs 9:00PM

The NPS offers evening programs at the outdoor theater south of the North Campground in summer. They're typically from 9:00PM – 9:45PM. Check at the Visitor Center or the [NPS online Calendar](#) for topics during your visit.



### Night Sky

Bryce Canyon National Park is a certified International Dark Sky Park (IDSP). On a moonless night, you can see up to 7,500 stars in the sky (compared with an average 2,500 in most places). You'll see the most stars when the sky is darkest, which is generally the week of the new moon and the week prior to the new moon.

If you don't have your own telescope, there are a couple of ways to enjoy the starry spectacle:



# 1 DAY ITINERARY

## EVENING



(a) Evening programs are sometimes followed by stargazing programs. The NPS offers about 100 astronomy programs a year, presented by their astronomy rangers and volunteers. Program topics may include the life cycles of stars, space exploration missions, the stories written in the constellations, etc.

Visit the [NPS Ranger Programs page](#), their online calendar, or ask at the Visitor Center to see what is available when you're there.

(b) Dark Rangers organize professional telescope tours at their observatory outside the western boundary of the national park. Check the [Dark Rangers](#) website for details.



### Constellation Tours

The NPS also offers Constellation Tours 9:00PM, 9:30PM and 10:00PM on Thursday - Saturday nights, Memorial Day through September 30 and on Saturday nights only October 1 - Memorial Day.

The tours last 15-20 minutes. Rangers with lasers point out constellations in the night sky and discuss the science and cultural history of astronomy. Check at the Visitor Center for availability, start times, and location and to sign up (registration is necessary).



### Full Moon Hikes

The NPS also offers 1- 2-mile/ 2-3-hour Full Moon Hikes (1-2 consecutive nights each month). The mix of shadows and moonlight cause the hoodoos to take on spooky personalities.

The hike is popular, and spaces are limited, so you need to enter a lottery at the Visitor Center on the same day as the hike. The lottery drawing is held at 4:00PM at the Visitor Center, so you need to be at the Visitor Center by 4:00PM to be included in the lottery. Check the [NPS Full Moon Hike](#) website for more details.



# ADJUSTING YOUR SCHEDULE

The schedule is based on a stay in **Bryce Canyon City**. This area has the most accommodation options and is close to the park entrance but there are other places to stay in and around the park. If you stay in or near these places, adjust the schedule as follows:

## Staying inside the park

**Option A:** Walk to Sunrise Point

**Option B:** Keep the same

## Staying on Highway 12

**Option A:** Start 5 minutes earlier

**Option B:** Start 5 minutes later

## Staying in Tropic

**Option A:** Start 15 minutes earlier

**Option B:** Start 10 minutes later

## Staying on Highway 89

**Option A:** Start 20 minutes earlier

**Option B:** Start 5 minutes later

## Staying at Zion National Park

I don't recommend staying in Zion National Park and visiting Bryce Canyon as a day trip as it adds a lot of unnecessary drive time to your trip. Most people visit the two parks on the same trip, and I recommend this, but it's best, if at all possible, to stay at each of them separately. However, if you decided to stay near Zion, start 1 hour 45 minutes earlier

## COMBINING BRYCE CANYON & ZION OR GRAND CANYON

This itinerary can be easily combined with a [Zion National Park itinerary](#) and/ or [Grand Canyon Itinerary](#).

### Going to Zion or Grand Canyon after Bryce Canyon

Zion National Park is less than 2 hours away. If you're headed to Grand Canyon, I recommend breaking your trip in Page, which is less than 3 hours away.

If you plan to leave directly for Zion or Page after your day in Bryce Canyon, skip the Visitor Center in Option B and get there in time for dinner. If you choose Option A, head straight there and arrive for a late dinner or grab something quick for dinner on the way there. Alternatively, you could leave in the morning and pick things up the following day.

### Coming from Zion or Grand Canyon before Bryce Canyon

You can easily leave Zion at the end of that itinerary and arrive to Bryce Canyon National Park in time to pick up this itinerary. Refer to the Zion itinerary for adjustment suggestions.

If you are in Grand Canyon before, I recommend breaking your journey in Page and going to Antelope Canyon and Horseshoe Bend and then arriving at Bryce Canyon the night before your day here.



# USEFUL LINKS

These links are all available in the actual itinerary, but here they are all together as a useful planning and preparation resource.

**Bonus extras (Accommodation Guide, Dining Guide, Shuttle Guide)**

<https://parkscollecting.com/bryce-canyon-bonus-extras-xh74lk03b/>

**Itinerary Updates**

<https://parkscollecting.com/itinerary-updates-f6x9m2/>

**Bryce Canyon National Park Entrance Fee**

<https://www.nps.gov/brca/planyourvisit/fees.htm>

**Annual Pass:** [America The Beautiful Pass](#)

**Zion National Park Itineraries** (use code BRYC for a 20% discount)

<https://parkscollecting.com/zion-itinerary/>

**Grand Canyon National Park Itineraries (use code BRYC for a 20% discount)**

<https://parkscollecting.com/grand-canyon-itinerary/>

**Ranger Programs**

<https://www.nps.gov/brca/planyourvisit/ranger-programs.htm>

**Current Park Conditions**

<https://www.nps.gov/brca/planyourvisit/conditions.htm>

**Sunrise and Sunset Times**

<https://www.timeanddate.com/sun/@5535938>

**Book Flights:** [Skyscanner](#)

**Camper Van Rentals:** [Escape Campervans](#)

**Accommodations**

[Hotels and motels](#)

[Vacation rentals](#)

[Campspot](#)

[Campnab](#)

**Travel Insurance:** [Travelex](#)

**Packing Lists:** <https://parkscollecting.com/packing-lists/>

